

[View weather](#)

[View tide data](#)

- [Your Council](#)

- [News and Events](#)

The latest Council news and events

- [Meet the team](#)

Our staff and elected representatives

- [Meetings and Agendas](#)

Find out about upcoming meetings and read agendas

- [Community outcomes](#)

Social, economic, environmental and cultural wellbeing

- [Requests for Information](#)

How to request official information from the Council

- [Visit the Chatham Islands](#)

The Chathams Islands is a remote, awe-inspiring place

- [Local elections 2022](#)

Information on the upcoming local election

- [Subscribe to our newsletter](#)

- [Previous newsletters](#)

- [Our submissions](#)

- [Services](#)

- [Primary Services](#)

[Infrastructure](#) [Waste Management](#) [Pest Management](#) [Biodiversity](#) [Emergency Management](#) [Resource Management](#)

- [Community and Culture](#)

[Animal Control](#) [Cemeteries](#) [Library Services](#) [Gambling Venues Policy](#) [Historic Places](#)

- [Rates, Consents and Licensing](#)

[Your Rates](#) [Building and Resource Consents](#) [Food and Alcohol Licensing](#) [Council Dues & Charges](#)

- [Coastal Services](#)

[Port Charges](#) [Navigation Safety](#) [Swing Moorings](#) [Marine Pests](#)

- [Environmental Data](#)

[Rainfall Data](#) [River Flow and Water Level Data](#) [Soil Temperature Data](#) [Tide Predictions](#) [Water Quality Data](#) [Wind Data](#)

- [Essential Freshwater package](#)

[What are the new regulations?](#) [Freshwater Farm Plans](#) [Wetland management](#) [Stock exclusion](#) [Fish passage](#)

- [Documents](#)

- [Chatham Islands Council Annual Plan](#)

Sets out our work and priorities for the next financial year

- [Chatham Islands Council Long-Term Plan](#)

Our work and priorities for the next decade

- [Chatham Islands Resource Management Document](#)

Resource management framework summary

- [Chatham Islands Council Dog Control Policy & Bylaw](#)

[View weather](#)

[View tide data](#)

## Dog Control Bylaw overview

- [Annual Report](#)

An overview of the Council's activity

- [Vehicles on Beaches Bylaw](#)

Waitangi Beach vehicle bylaw

- [Regional Land Transport Programme](#)

Transport priorities for 2021 - 2031

- [Chatham Islands Council Rates Remission Policy on Māori & Moriori Freehold Land](#)

- [Chatham Islands Council Navigation Safety Bylaws](#)

Managing boating and other activities on water

- [Chatham Islands Council CDEM Group Plan](#)

Understanding hazards and risks to build capability

- [Chatham Islands Investment Strategy](#)

A report on the Chatham Islands economy

- [Search all Documents](#)

- [Contact](#)

- [View weather](#)

- [View tide data](#)

## □ [News and Events / 2023](#)

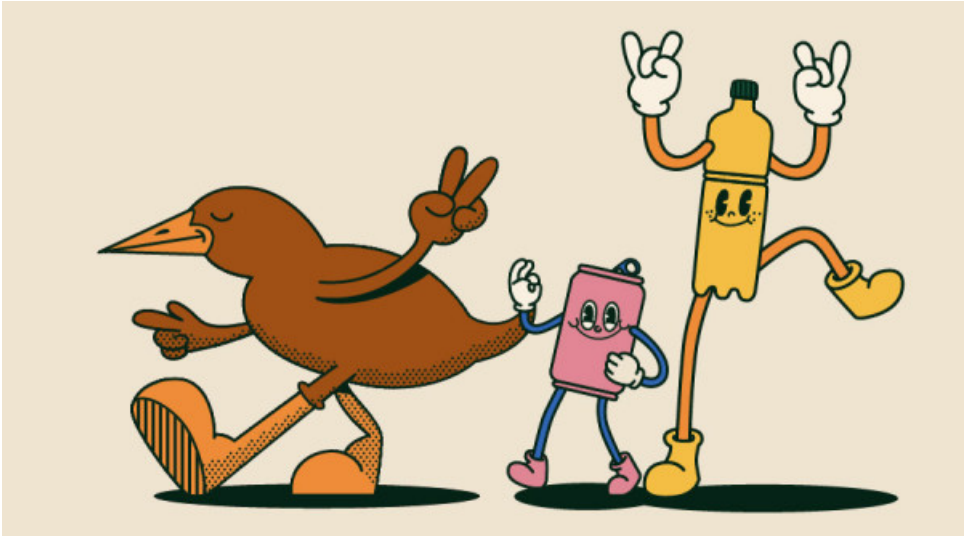
- [News and Events](#)
- [Meet the team](#)
- [Meetings and Agendas](#)
- [Community outcomes](#)
- [Requests for Information](#)
- [Visit the Chatham Islands](#)
- [Local elections 2022](#)
- [Subscribe to our newsletter](#)
- [Previous newsletters](#)
- [Our submissions](#)

# Bins and bags are coming!

- Last Updated 20 Sep 2023

[View weather](#)

[View tide data](#)



Over the coming weeks, each household and business will receive a new recycling bin and some rubbish bags.

We have had many enquiries over the years regarding having recycling bins produced so we are now happy to announce that they are coming! These bins will make it easier for you to carry your recyclables when taking them to the Transfer Station.

Each household/business will be given one bin each and 52 bags. You can purchase any extra bins (\$25ea) or bags (\$4 for 10 or \$12 for 52) from Council.

## Before biffing it out, think...

Can I reuse this? Can I repair this? Could this be used for a different purpose? Is it recyclable?

It's important we try to reduce our waste where we can. It takes all of us!

Thanks for your support with making the Chathams a great place to live.

## Need help? Get in touch

[Email us](#)

[Phone us 03 305 0033](#)

[Visit us](#)

## Your Council

[Council](#)

[Local elections 2022](#)

[News and Events](#)

[Meet the Team](#)

[Meetings and Agendas](#)

[Community Outcomes](#)

[Requests for Information](#)

[View weather](#)

[View tide data](#)

[Visit the Chatham Islands](#)

[Subscribe to our newsletter](#)

## Services

[Our Services](#)

[Primary Services](#)

[Community and Culture](#)

[Rates, Consents and Licensing](#)

[Coastal Services](#)

[Environmental Data](#)

[Essential Freshwater](#)

## Documents & Forms

[Key Documents](#)

[Search all Documents](#)

## Contact

[Contact your Council](#)

[Chatham Islands Council Facebook](#)

[Emergency Management Facebook](#)

[Subscribe to our newsletter](#)

## Useful Links

[Civil Defence](#)

[Discover the Chatham Islands](#)

[Environment Canterbury](#)

[Find us on](#)

Chatham Islands Council © 2023

[Privacy](#)

[Copyright](#)

[Accessibility](#)

[View weather](#)

[View tide data](#)