

Annex 1 – Equipment and Resources



Chatham Islands Council

Equipment and Resources

(this page has been left intentionally blank)

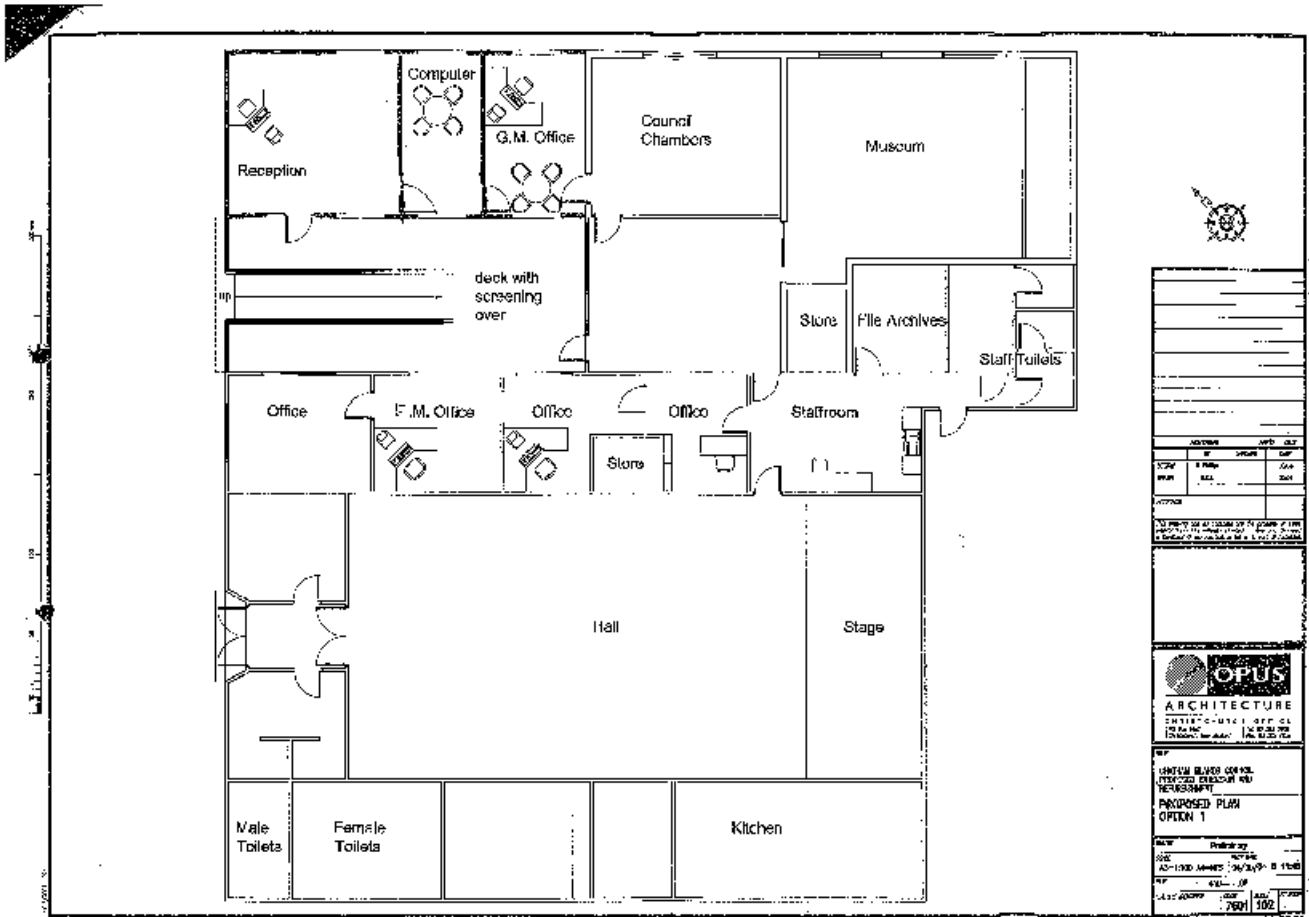
Table of Content

Incident Command Centre (ICC)	4
1.1.1 Tier 2 and Tier 3 Incident Command Centre Floorplan	4
1.1.2 Incident Command Centre Layout (In the Council Chambers)	3
Equipment	4
2.1.1 Maritime New Zealand Equipment	4
2.1.1.2 Additional Maritime New Zealand Equipment	4
2.2.1 Storage, Maintenance & Hire of Maritime New Zealand Equipment	4
2.2.2 Responsibilities off Maritime NZ	4
2.2.3 Responsibilities of the Chatham Islands Council	5
2.2.4 Insurance.	5
2.2.5 Breach of agreement.	5
2.2.6 Assignment.	6
2.2.7 Termination.	6
2.3.1 DoC Chatham Islands	7
2.3.2 Fire Service	8
2.3.3 Locally Based Support Equipment	8
2.3.4 Fixed Wing Aircraft	8
2.3.5 Vessels	9
Wildlife	9
3.1.1 Temporary Holding Centres	9
3.1.2 Temporary Rehabilitation Centre	9
Waste	9
4.1.1 Disposal	9

Incident Command Centre (ICC)

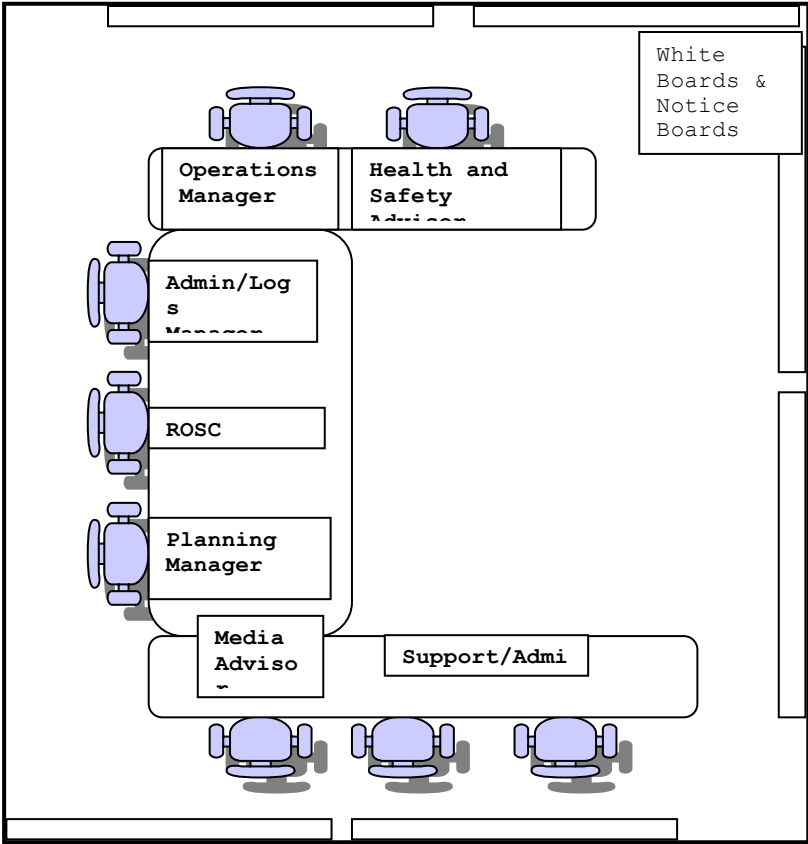
1.1.1 Tier 2 and Tier 3 Incident Command Centre Floorplan

The ICC for the Chatham Islands ICC will be the Chambers of the Chatham Islands Council offices, Tuku Road, Waitangi.



- The Council Offices are equipped with the following:
- Telephone
 - Facsimile
 - Marine VHF-FM and Channel 2B – AM
 - Topographic maps
 - White Boards
 - Desks
 - Photocopier
 - Stationery
 - Computer (runs Microsoft Word for Windows)
 - Limited kitchen facilities

1.1.2 Incident Command Centre Layout (In the Council Chambers)



2.1.1 Maritime New Zealand Equipment

Maritime New Zealand equipment is stored at the Enterprise Trust (in the old meatworks) located on Sandstone – Owenga Road, Waitangi.

Contact for Mobilisation Nigel Ryan (03) 305 0264 (24 hr)

Type of Equipment	Quantity
Ramjet rope mop, oleophilic	1
Global spill weir skimmer	1
Spate Pump – general service	1
Dispersant Spray Set	1
Helicopter spray nozzles TK 10	50
Helicopter spray tips TK 10	50
Swissmex 15l backpack spray	1
Frame Tank 25 Tonne	1
Frame Tank 15 Tonne	1
Flexidam 10 tonne	1
Land/sea boom, 80m	8
Rapid deployment boom, 99m	1
Stihl inflator for land / sea boom	1
Hand Pumps, quicksilver	1
Hand wringers, extractor pro	1
Wildlife Equipment, Misc items	1
Plastic containers, 20l for dispersant	64
Gamlen OSD LT	4000 litres
Exxon corexit 9527	1600 litres
Oil Snares	60
Absorbent pads	1,600
Pillows	120
Absorbent Booms	48

2.1.2 Additional Maritime New Zealand Equipment

Annex 1 of the National Marine Oil Spill Contingency Plan lists equipment owned by Maritime New Zealand that is stored in other regions, and at the National Oil Spill Service Centre. If additional equipment is needed in a response, this list should be referred to first, as the items of equipment with those listed above.

2.2.1 Storage, Maintenance & Hire of Maritime New Zealand Equipment

2.2.2 Responsibilities of Maritime NZ.

Maritime New Zealand will:

- Refund the Chatham Islands Council the actual and reasonable costs of storing and maintaining the equipment located at the Enterprise Trust,
- Bear the cost of delivery and return of the equipment;
- Lend the equipment for an indefinite period

2.2.3 Responsibilities of the Chatham Islands Council.

The Chatham Islands Council will:

- Take delivery of the designated equipment at a mutually agreed place;
- Within the constraints imposed by isolation, make the equipment available for use or re-deployment by Maritime NZ in an emergency or otherwise anywhere in New Zealand or overseas, at the request of Maritime NZ;
- Except when deployed for actual or simulated oil spills, store the equipment at all times in a secure, clean and dry storage area enclosed from the weather and vermin free;
- Recover from the polluter the cost of equipment used in a marine clean-up response operation. The rates to be charged to the polluter are those established by Maritime NZ for the hire of the equipment;
- Obtain the prior permission of Maritime NZ for the use of the equipment for purposes other than marine clean-up response operations or for the training purposes of the Chatham Islands. If approval of Maritime NZ is given then the Chatham Islands Council shall ensure that a Hire Agreement supplied by Maritime NZ is signed and complied with by the equipment's user, and that monies accrued from such hire is credited to Maritime NZ (less administration costs of the Council). Additionally, Chatham Islands Council is to ensure that the equipment is returned in the same condition as it was hired out, that remedial repairs are made at the expense of the user, and shall inform the owner of any damage or deterioration incurred;
- Keep Maritime NZ informed of the equipment's serviceability, location and how it may be obtained;
- Keep the equipment, during the period of the loan, in good and substantial repair and condition [fair wear and tear excepted] in accordance with the maintenance schedules provided by Maritime NZ. In doing this, the Chatham Islands Council is to ensure that repairs to retain the structural integrity and performance of the equipment; are undertaken by a contractor approved by Maritime NZ; and that Maritime NZ be consulted before repairs exceeding \$500.00 are undertaken;
- Indemnify and keep indemnified Maritime NZ from and against all actions, claims, proceedings, demands, losses, expenses and costs of every kind whatsoever (except those specified in Section 2 above) which may be brought against or upon Maritime NZ or which it may incur, sustain or be put to by reason of or arising out of or in any way attributable directly or indirectly to the loan of the equipment and its use by the Chatham Islands Council, or any third party. This does not exclude costs listed above and clean up costs;
- Operate the equipment only under the supervision of person(s) trained in its use by Maritime NZ, in accordance with the operating procedures forwarded with the equipment, and in accordance with any supplementary instructions given by Maritime NZ. The Chatham Islands Council will ensure that any third party operates the equipment in accordance with the procedures forwarded with the equipment and any supplementary instructions given by Maritime NZ.

2.2.4 Insurance.

The equipment is insured by Maritime NZ except when hired by a third party who shall take out insurance as part of the Hire Agreement. The Chatham Islands Council will not be liable for damage to the equipment except where such damage was caused by wilful misconduct or gross negligence on the part of the Council, or where such damages results from a breach of this Agreement by the Council.

2.2.5 Breach of agreement.

If the Chatham Islands Council breaches this agreement, and as a result of such a

breach the equipment is damaged or lost, the Chatham Islands Council may be liable to Maritime NZ for the damage or loss. Such liability may include total cost of repairing or replacing the equipment to Maritime NZ's specification.

2.2.6 Assignment.

There shall be no assignment under this Agreement without the consent of Maritime NZ.

2.2.7 Termination.

The agreement for the loan of Maritime NZ equipment to the Chatham Islands Council may be terminated by either party during the period of the loan by giving not less than one week's notice in writing to the other, and whenever this agreement is so terminated the Chatham Islands Council will allow Maritime NZ to retrieve the equipment from the place where delivery was taken, or at some mutually agreed place.

2.3.1 DoC Chatham Islands

The following equipment is stored at DoC, Te One.

Type of Equipment	Quantity	Contact for Mobilisation
Communication		(03) 305 0098 (wk) (03) 305 0560 (ah)
Handhelds	19	
Basesets	3	
Trucksets	7	
Satellite Phone	1	
Boats		
2 Niad rigid hull boats 1 x 15 hp, 1 x 25 hp outboards and safety gear	2	
Vehicles	3	
Quadbikes	14 (1 on Pitt Is)	
Trailers	4	
Mules (4 seater)	2 (1 on Pitt Is)	
Trucks	7 (6 4wd)	
Tractor	1	
Miscellaneous		
Fuel Containers		
Life Jackets		
Portable Generators	4	
Handtools (spades/rakes)	Numerous	
Chainsaws	2	
Scrubbars	4	
Sealed Buckets	Numerous	
Pumps and Hoses		
Mk5 Wajax pump c/w base, each with suction hose and extensions & trailer	1	
Forestry hose packs (25mm)	Numerous	
Forestry hose packs	Numerous	
Regga knapsack pumps	10	
Hydroblender	3	

2.3.2 Fire Service

The following equipment is stored at the NZFS building.

Type of Equipment	Quantity	Contact for Mobilisation
Portable pump 6 inch suction – 2.5 inch delivery with hoses	1	Jo Thomas (03) 305 0017
Portable pump 4 inch suction with hoses	1	
Portable pump 2 inch suction with hoses	2	
Extra suction hoses	Several	
41 mm div breaching	3	
Hydroblender	2	
Soap capsules	1	
Regga knapsack pumps	4	
Hose pack and nozzle (blue)	2	
Portable dam	1 x 1,200 litre	
Angus class A foam	100 litres	

2.3.3 Locally Based Support Equipment

Works Infrastructure

Equipment Available:

Graders

Front end loaders

Trucks

Truck with Hiab

Water tank for trucks

Bulldozer

Contact: Waitangi 305 0498

Black Robin Freighter

Fork lifts x 3

Contact: Manager 305 0440

Chatham Motors

Case W7E Loader

Truck 7m

Contact: 305 0093 wk, 305 0027 ah

2.3.4 Fixed Wing Aircraft

The following aircraft may be used to direct vessels in containment/clean up/dispersant applications

Air Chathams' 305 0209

Cessna KAI 305 0126 (a/h)

2.3.5 Vessels

The following vessels may be available for dispersant spraying

No vessels are currently identified as being suitable for dispersant spraying. This will be assessed by CIC and suitable vessels identified if they are available.

Wildlife

3.1.1 Temporary Holding Centres

Due to the small size of the Islands and the lack of facilities available to establish temporary holding centres, the most practicable approach is to establish holding centres for stabilisation close to the wildlife collection points. These centres may be tents or shipping containers or back of trucks. Wildlife would then be driven to the rehabilitation centre for cleaning and rehabilitation.

3.1.2 Temporary Rehabilitation Centre

A TRC was established at Owenga at the southern end of Hanson Bay during the Seafresh event. This facility could be used as the TRC for most spill events in the Chatham Islands if required.

However, other similar facilities may be established closer to holding centres depending upon availability of buildings at the time (i.e. due to seasonal variation in farming and fishing requirements).

TRC's require a specialised "on demand hot water system" with the following features:
Dial up temperature control (39 – 43 degrees),
Adequate reservoir so that flow is not interrupted,
Pressure must be high enough for rinsing and proofing process,
Softened water.

Hence, varying levels of work is required to establish a washing system that meets these requirements. Establishing such systems in the TRC requires expert input from Massey IVABS, and is generally a less cost effective option than using the mobile washing unit available from Massey IVABS.

Waste

4.1.1 Disposal

There are no landfills suitable for disposal of oily waste material on the Chatham Islands. Oil and assorted oily waste material collected from the response operation is to be segregated and stored in suitable containers/vessels awaiting disposal. It could be necessary to store oily waste for extended periods of time. There is no sizable quantity of suitable containers for this purpose currently held on the Chathams and therefore it will be necessary to make arrangements for storage and transport as part of the response.